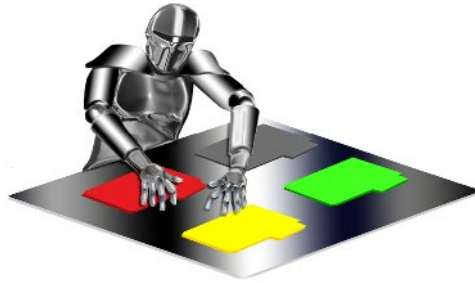


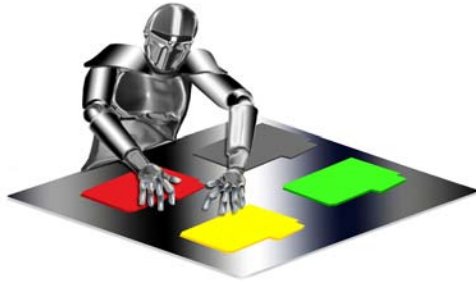
# Quite



# Hot 3

## Contents

Installation . . . . .	2
About the demonstration edition . . . . .	2
Windows . . . . .	2
Macintosh . . . . .	3
About Quite Hot Imposing . . . . .	4
Applying Impositions . . . . .	4
Quite Imposing Plus functions not available . . . . .	4
Hot Folder Concepts . . . . .	5
Important Points in Choosing Hot Folders . . . . .	6
Limitations . . . . .	6
License . . . . .	6
Single PDF File Output . . . . .	6
No Printing . . . . .	7
PDF Version . . . . .	7
Must Be Running . . . . .	7
Setting up Quite Hot Imposing . . . . .	8
Choosing Hot Folders . . . . .	8
Selecting the Imposition . . . . .	8
Selecting an XML file . . . . .	9
Selecting a Sequence stored in Quite Imposing Plus . . . . .	9
Other Setup Options . . . . .	10
Deleting or Pausing a Queue . . . . .	10
Reading the Quite Hot Imposing Panel . . . . .	12
Other Topics . . . . .	13
Quitting Quite Hot Imposing . . . . .	13
Errors, Messages & Logging . . . . .	13
Preferences . . . . .	14
Other Documents Available . . . . .	16



## Installation.

### About the demonstration edition.

If you have received a demonstration edition of the product, it is installed in the same way and requires a serial number too, except that you will see “**Demo**” in the names of any files or folders. The demo edition will add an “**X**” over each file produced.

Please note that the demonstration edition is completely separate from the live edition. You can have both installed, but if you purchase the live edition, you will probably want to uninstall the demonstration edition. This does not affect the live edition.

## Windows

You will need **Microsoft Windows XP or later**.

### From CDROM

If the installation does not start automatically, locate the **SETUP.EXE** file and run it. It will ask you to confirm where the software is to be installed.

You will need to run the hot folder product once to enter the license, even if you will be using **Quite Hot Imposing** to integrate with other software after that.

You may uninstall using **Add/Remove Programs** from the **Windows Control Panel**.

### From a download

The file you downloaded for Windows should be an **EXE** file. Double click to run it. If the installation does not start automatically, locate the **SETUP.EXE** file and run it. It will ask you to confirm where the software is to be installed.

You will need to run the hot folder product once to enter the license, even if you will be using **Quite Hot Imposing** to integrate with other software after that.

We recommend keeping an archive copy of the install EXE file (for example, on CD disk), so that you can reinstall if you have a disk problem. You may uninstall using **Add/Remove Programs** from the **Windows Control Panel**.

## Macintosh

You will need **Mac OS X.5 (“Leopard”)**. The software will not run on earlier versions of Mac OS and is likely to simply fail without any error message.

### From CDROM

Locate the folder called **Quite Hot Imposing** and drag it into your **Applications** folder. After you have dragged it, you can look in your Applications folder for this new copy, and run **Quite Hot Imposing**. Do NOT run Quite Hot Engine, but do not remove it either; it is needed by the hot folder product.

You will need to run the hot folder product once to enter the license, even if you will be using **Quite Hot Imposing** to integrate with other software after that.

You may uninstall by deleting the folder you copied before.

### From a download

The file you downloaded for Macintosh should be a DMG file. A DMG file should automatically mount and show in the Finder. If it does not do this automatically, double click. Then look in the mounted disk for a folder called **Quite Hot Imposing**. Drag this to the **Applications** folder. You have now finished with the mounted disk image, and can eject it.

After you have dragged it, you can look in your Applications folder for this new copy, and run **Quite Hot Imposing**. Do NOT run Quite Hot Engine, but do not remove it either; it is needed by the hot folder product.

You will need to run the hot folder product once to enter the license, even if you will be using **Quite Hot Imposing** to integrate with other software after that. We recommend keeping an archive copy of the DMG file (for example, on CD disk), so that you can reinstall if you have a disk problem. You may uninstall by deleting the folder you copied before.

# About Quite Hot Imposing

## Applying Impositions

The easiest way to understand **Quite Hot Imposing** is to work with Quite Imposing Plus for a while. All of the imposition functions in **Quite Hot Imposing** are identical to those in the plug-in. It is also quicker and easier to see the results of an imposition when it is run on an open document in Adobe Acrobat.

Impositions can be completely set up in **Quite Hot Imposing**, but it may be harder to visualise the results when this is done.

In either case, an imposition is a series of one or more commands. For example, you might shuffle the pages of a document into the order required (also rotating some of them), using the **Shuffle Pages** command. Then you might use the **N-Up Pages** function to arrange these pages onto sheets. More complicated impositions might **add page numbers, shift pages** to allow for binding (“creep”), or insert a cover page using the “background” feature.

Once an imposition has been made in Quite Imposing Plus, it is immediately available for use in **Quite Hot Imposing** in several ways:

- The PDF file you made contains full details of the command used. You can save the PDF then use it as a control file in Quite Hot Imposing.
- You can export these commands as XML (from the **Info panel**). This too can be used as a control file.

You can import commands into automation sequences in Quite Imposing Plus. This is particularly flexible as you can test the automation in the plug-in. For each set of commands you import, you choose a name and category. (The category is anything you choose, to help organise large sets of commands). The automation sequences you set up in Quite Imposing Plus are available immediately in **Quite Hot Imposing**.

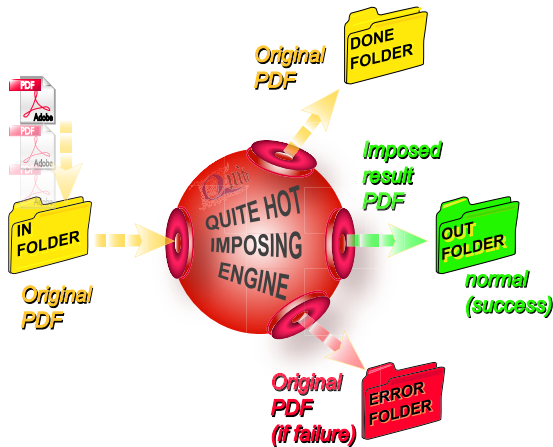
## Quite Imposing Plus functions not available

A few of the functions of Quite Imposing Plus are not available in **Quite Hot Imposing**. These are the functions which work with more than one file (since Quite Hot Imposing is always one file in-one file out); and the functions which depend on a knowledge of the “current page”, since there is no idea of a current page in a batch program.

The main functions not available are:

- **Manual imposition** to overlay an existing document. (Manual impositions to a new document or background can be used to make complex layouts for imposition).
- **Shuffle even odd functions** that split or merge files.
- **Booklet making options** that produce two files.
- **Join 2 Pages** (since it joins the current page). However from version 3.0, this does work for a document with exactly two pages.
- **Various Insert Pages options** related to the current page (e.g. insert before current page, make page the same size as current), and the Insert Page option to make a new document.
- **Options in any command to work on the “current page”**. Use a specific page number instead.

## Hot Folder Concepts



**Quite Hot Imposing** lets you work with hot folders, also called watched folders. These are found in many products, but there may be differences in **Quite Hot Imposing**, so it is worth checking this section even if you are familiar with other products.

**Quite Hot Imposing** allows you to set up multiple hot folders. In fact, each setup (called a queue) has four different folders:

- The **in** folder: PDF files to be processed are put into this folder. **Quite Hot Imposing** never puts files into here, but will take them out.
- The **out** folder: the resulting file, after doing the work, is put here. This is typically an imposed file, such as a booklet layout. The name will be the same as the original file.
- The **done** folder: the original file is moved to here, unchanged. This is done so that **Quite Hot Imposing** does not destroy any files. The file will only be moved to **done** when processing is successful
- The **error** folder: if a file cannot be processed, and doesn't make a file to put in **out**, we have to do something with it, rather than just leave it in the in folder. Otherwise, it would be processed again right away! So files which fail are moved to **error**.

To summarise the flow for each queue:

1. Files appear in the in folder.
2. **Quite Hot Imposing** attempts to process them to make an imposed file.
3. (a) On success, the files from **in** are moved to **done**, and the imposed file is put into **out**.  
(b) On failure, the files from **in** are moved to **error**.

## Important Points in Choosing Hot Folders

### Network Use.

Any hot folder can be on a network drive. However, we recommend you consider using a local drive instead, for the following reasons.

1. The hot folder process can fail or hang if the server containing the folder is unavailable. The risk increases if multiple hot folders on different servers are used.
2. On the Macintosh, you will need to make sure that the hot folders are mounted before starting **Quite Hot Imposing**; similarly on Windows if drive letters are used rather than machine names. On the Macintosh, using the same share name from different computers will cause confusion, as Mac OS X will change the disk names as seen by **Quite Hot Imposing**.
3. Watching a folder on the network may generate a lot of extra network traffic, since the server must be asked constantly if there are new files. Consult your network administrator about the effect this may have.
4. Writing output files to the network may be much slower than writing to local disks.
5. Care needs to be taken to make sure that the user who runs **Quite Hot Imposing** is able to write, rename and delete files in the shared folders.

### In, Done and Error on the same disk.

It is important to use the same disk (or network share) for the in, done and error folders for a single queue. This allows the input file to be quickly moved from **in** to **done** on success or from **in** to **error** on failure. Trying to set these up on different disks may fail.

### Unique In Folders.

You must not use the same in folder for different active queues. The folders work independently, and would both try to process the file at the same time, but only one would win. If you do set up several queues with the same in folder, the software will automatically make sure only one is active at a time. If you want to do this, it may be helpful to set the **Preferences** option **Show enable/disable** check box for each queue, to allow queues to be turned on and off more quickly. It is possible, and reasonable, to use a single folder as the **out** folder for several queues.

## Limitations

### License

The normal software license only allows the software to run on one computer, and does not allow it to process work from other sites or from the internet, or to be part of a process to automatically send imposed files off site.

### Single PDF File Output

**Quite Hot Imposing** always processes a single PDF file to make a new PDF file. There is no method to combine separate PDF files into a book, or pair of pages.

The only type of file accepted in an in folder is a PDF file. **Quite Hot Imposing** does not convert any other kind of file to PDF.

## No Printing

**Quite Hot Imposing** writes PDF files only. It does not include any method for printing files. Many high-end printers and imagesetters will work with their own hot folder system, and so they can be set up to look for files in the **out** folder(s) of **Quite Hot Imposing**.

## PDF Version

PDF files are identified by a version number, such as PDF 1.3 or PDF 1.6. Your other software may have limitations on the versions of PDF that it accepts. At the time of writing, PDF 1.7 files should be processed without errors. Optionally, Quite Hot Imposing will also preserve PDF/X mode (a stricter set of rules for PDF files)..

**Quite Hot Imposing** attempts to set the output PDF to have a suitable PDF version. Usually this is the same as the input PDF. However, using background PDF files would force **Quite Hot Imposing** to set the output file to use the highest PDF version.

The PDF files to be imposed must not have password or security options applied. PDF forms made with the Adobe LiveCycle Designer product cannot be processed.

## Must Be Running

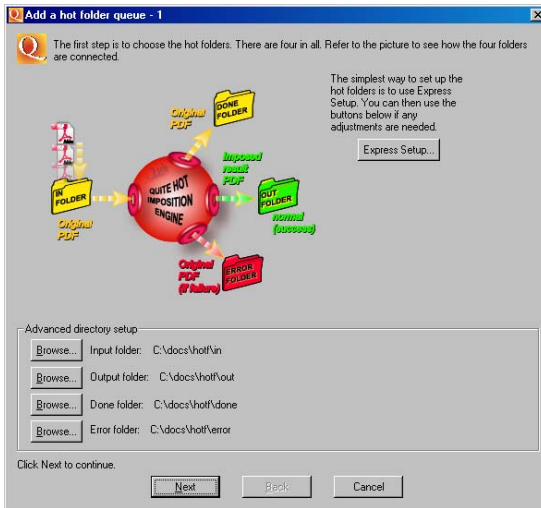
**Quite Hot Imposing** must be started on your Windows or Mac OS X monitor. Work will only be done as long as it is running. It always displays a status window (though this window can be minimized).

# Setting up Quite Hot Imposing

**Quite Hot Imposing** allows you to set up many different queues, each with its own set of four folders (in, out, done and error) and each of which may perform a different imposition. You can also turn off particular folders temporarily.

To add a new hot folder you can click the **Add** button (if shown) or use **Control > Add Hot Folder**. Each hot folder you add will appear as a line in the main **Quite Hot Imposing** window.

To change the settings for a hot folder, or to remove one, click the **Setup** button for that folder. In either case, a series of three dialogs will appear, to choose the hot folder, to select the imposition, and then to set other options.



## Choosing Hot Folders

In this dialog, you choose the four folders to be used (in, out, done and error) for a single queue.

The quickest way to set up the four folders needed is to click the **Express Setup** button. Select a folder (the option to make a new folder is available), and four new folders will be created inside that folder, called in, out, done and error. These four folders will be shown in the dialog, and can be separately changed if required (but changing them will not delete any folders that were created; the created folders will just be ignored).

You can also click the **browse** button to set up folders individually.

When the four folders are selected, **click Next**.

## Selecting the Imposition

On this dialog, you decide what imposition is to be done using the hot folders you just selected. You can either use a control file, or use a named sequence set up with the Quite Imposing Plus plug-in. Once you have made your selection, **click Next**.



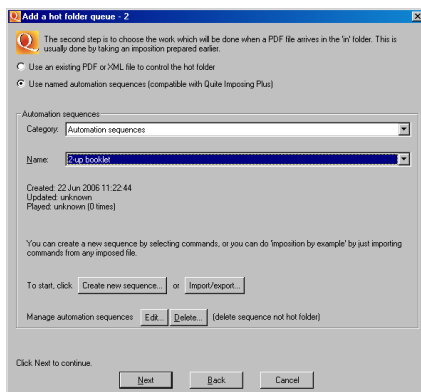
## Selecting an XML file



Click the **Browse** button to select a control file. This may be an XML file or a PDF file produced by Quite Imposing Plus version 2, or from **Quite Hot Imposing** itself. Any imposed PDF file can be used as a control file.

The **Details** button can be used to review full details of the imposition stored in your control file.

## Selecting a Sequence stored in Quite Imposing Plus



Automation sequences have a category and a name of your choice. The default category is just **“Automation sequences”**, but you can create more categories to organise your work.

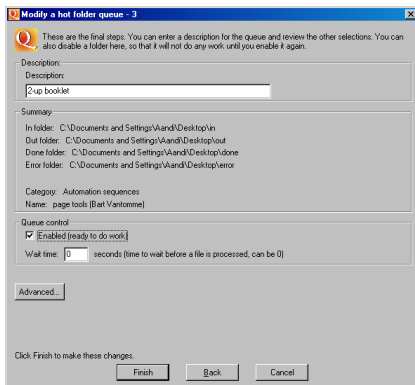
Normally this dialog is just used to select an existing sequence. But you have full control of creating and editing sequences too, just as in the Quite Imposing Plus plug-in. Options include

- **Create new sequences** – select imposition commands to make a new sequence from scratch
- **Import** – create a sequence from an existing PDF document, or XML document, so you don't need to worry about keeping all your control files.

- **Export** one, some or all of your sequences into a new XML file. Note that if you export more than one sequence into one XML file, you cannot use this directly as a control file, but you can import the sequences back from it.
- **Edit a sequence**, by adding or removing commands, or changing options.
- **Delete a sequence**. If the last sequence in a category is deleted, the category is deleted (unless it is the default category).

For more details on this, refer to the Quite Imposing Plus manual for automation sequences.

## Other Setup Options



The final setup dialog for a queue allows you to select further options.

- The description of the queue. This will be shown on the main window. The description will be filled in from the name of a setup file or stored sequence, but you can set it to something that makes more sense to the operator of the software
- The “enabled” switch. If you switch this off, the queue settings will be remembered, and the queue will still be shown on screen, but it will not accept any work. If a queue is not enabled it will have a different symbol on screen.
- The “wait time” allows you to wait longer for a PDF file to be ready. This defaults to 0 seconds. If you set it for longer, then Quite Hot Imposing will ignore a file until it sees that the file has not been written for that number of seconds. This may be useful if another program is creating files in the In folder, and does not do this all in one step.
- The Advanced button allows you to set special options as may be advosed by Quite Software. There are no options for normal use.

After you **click Finish**, the hot folder is ready for processing.

## Deleting or Pausing a Queue

You can delete a queue by clicking the **Setup** button next to the queue description. A **Delete** button is shown (this button is not shown when you first create a queue, only when running Setup later).

When a queue is deleted, all the other queues after it will be renumbered. This should be remembered when reading the log, which uses queue numbers to identify them.

You can pause a hot folder in several ways.

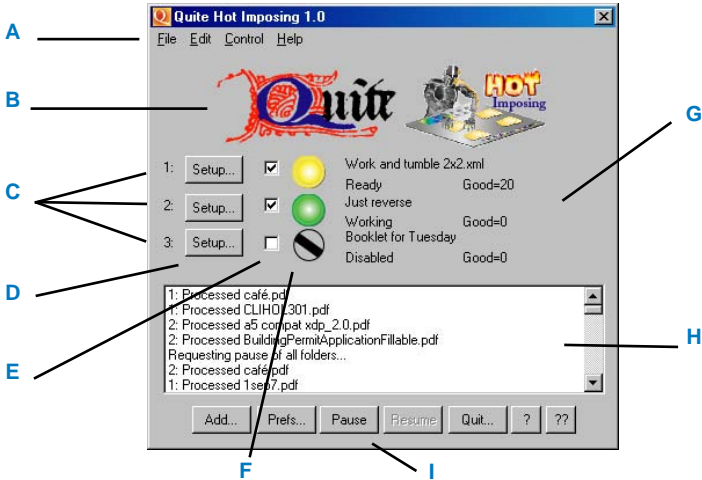
- The third setup dialog allows you to turn off “**enabled**”. When a queue is not enabled, it is paused.
- In **preferences**, you can select “**Show Enable/disable check box for each queue**”. With this on, each folder has a check box to allow you to quickly turn it on or off.

You can also click the **Pause** button on the main window, if it is shown, or use **Control > Pause**. This pauses all folders. When you click **Resume**, or use **Control > Resume**, processing carries on. This is independent of the separate pausing of single folders.

For example, if queue 1 was active and queue 2 was paused before you click the Pause button, all will pause. But when you click Resume, only queue 1 will resume, and queue 2 will still be paused

When a queue is paused, the work it is currently doing is allowed to complete. If you want to force it to stop, click the **Setup** button, and you will be given that choice.

# Reading the Quite Hot Imposing Panel



A. The **menu bar** gives access to all the functions you can reach with the bottom line of buttons.

B. The logo is optional. It can be turned off in **Preferences**.

C. The number 1: 2: etc. gives the **queue number**. This appears in the log and in messages to identify which folder is involved.

D. The **Setup** button is used to change any settings for a particular queue, including the hot folders used, which imposition task to perform, the name of the queue, and whether or not the folder is enabled. The Setup button can be turned off in preferences, but you would have to put it back to edit.


E. This check box does not appear by default, but can be turned on with the preference **"Show enable/disable check box for each queue"**. If it is there you can quickly enable or disable queues without going through setup.

F. The symbol here shows **the state of the queue**. The main colour of the symbol is as follows.

 Yellow: ready/waiting.

 Green: working.

 Red: problem, queue disabled (use Setup to enable it after clearing the problem).

 Crossed through: queue is disabled.

G. There is **information here about the queue**. The first line is the name, which you can set in preferences. It may be set to an XML file name, but you can change that. The state (Ready, Active, Broken, Disabled) is shown. The count of files which were Good (put in out folder) or Bad (put in error folder) since the last setup are shown.

H. This area shows **recent events**. See “Errors, messages and logging” below for more details. Only a limited number of lines are shown, but you can get more detail from the log.

I. These buttons give access to functions also available from the menu. When no queues are set up, click Add to create your first queue. The Pause and Resume buttons affect all folders independently of whether they are enabled or not. “?” gives access to help, including web pages. “??” gives “about” and licensing information.

## Other Topics

### Quitting Quite Hot Imposing

When you quit **Quite Hot Imposing**, the window will close, and all processing will stop. The hot folder processing will not continue behind the scenes

### Errors, Messages & Logging

The **Quite Hot Imposing** window includes an area where messages are added. Every file that is handled will produce at least one message. When a file works, the message will be something like:

1: Processed Large spread.pdf

The message starts with the queue number, and includes the name of the file. Note that deleting a queue will not change the numbers shown for old messages.

If there is an error, there will be more than one line. For example

1: Failed, Tower pic.jpg moved to error.  
1: ...\*\* File does not begin with ‘%PDF’.

This error is in fact telling you that the file is not a PDF file at all, and this can be confirmed by checking the file name: it is a JPEG.

If an error occurs on a PDF, it is likely to be caused either by a corrupted or damaged PDF, or by a PDF with security settings. **Quite Hot Imposing** cannot make any changes to a file with PDF security. (Acrobat’s File > Preferences will show security information under the Security tab. To remove security, the file’s creator must usually tell you the password).

In some cases, warning messages or information messages will be issued for files that succeed. These will come after the “Processed” message. The most common message is:

**Warning, document contains bleed information, which has been used in layout (trim box used).**

You can remove this message in **Preferences**.

This happens when you process a file for which a bleed area (trim box/bleed box) has been defined. You can remove this message by using preferences.

**Quite Hot Imposing** also writes a log file, with all information from the window. (The window only keeps a limited number of lines). The log file actually contains more information, including the full name of each file processed, and the details of the settings which were used in each case.

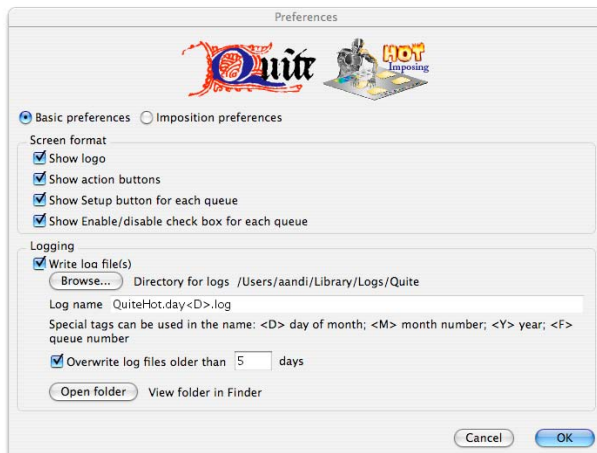
Preferences are available to choose the name of log files, and how long they are kept before being overwritten. Only expert users will need to change this. The default will produce a folder contain one log file for each day of the month, and which will be rewritten each month.

The **preferences** dialog also allows you to click an Open folder button to view the log file folder in Windows Explorer or the Mac OS X Finder.

## Preferences

**Quite Imposing Preferences** can be reached by clicking the **Prefs** button, if shown, or using Preferences from the menu (the menu is different in Mac OS X and Windows).

### Basic Preferences



The first group of options allows you to control how much information appears on the main window.

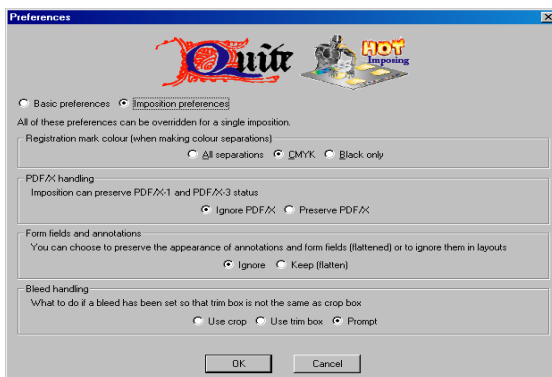
- You can choose whether the **Quite Hot Imposing** logo appears
- You can choose whether the buttons appear along the bottom row. If you turn this off, all the functions can still be reached from menus.
- You can choose whether to show a **Setup** button for each queue. If you do not show the **Setup** button you cannot change the setup for the queue. This is designed to reduce the risk that someone casually changes the setup, but of course a more sophisticated user can still go into Preferences to put the button back.
- You can choose whether to have an **enable/disable check box** for each queue. This is useful if queues need to be regularly switched on and off, especially if the Setup button is not shown.

For information on log file preferences, see Errors, messages and logging, above. Note the Open folder button, allowing you to see the available log files in Mac OS X Finder or Windows Explorer. Most users will not need to change these settings.

## Imposition Preferences

This information is an outline, since the options are the same as in the Quite Imposing Plus plug-in. More details are available in the Quite Imposing Plus Guide (see the “Imposition Preferences” chapter).

All of these options can be overridden on a per-imposition basis. To ensure that an imposition never changes its effect, we recommend setting options per-imposition rather than relying on preferences.



- Registration marks, added by N-up, Step & Repeat, Create Booklet or Manual imposition may be placed on all separations, on the C=M=Y=K plates, or on the black plate only.
- If Preserve PDF/X is switched on, then a PDF/X input file will produce a PDF/X imposed file. Certain restrictions apply. Version 3.0 supports PDF/X-1a, PDF/X-3, PDF/X-4 and PDF/X-5.
- Form fields and annotation (comments) can be used to add to pages. Sometimes this is just mark-up or instructions, not for final printing, and sometimes it is critical to print it. If you choose Keep (flatten), the printable information will be preserved in impositions (but will no longer be annotations or form fields).
- Bleed handling affects what is to be done when imposing a page that contains bleed information (technically, a “trim box” or “bleed box” which are not the same as the “crop box”). The default option, “Prompt”, is taken from Quite Imposing Plus, however, the standalone will not actually prompt; instead you will simply get a warning message when any file is imposed that contains bleed information.

## Other Documents Available

In addition to this document, a number of other documents will be installed on disk. These can be found in the docs folder, which can also be reached from the Help menu or “?” button.

- [command line spec.pdf](#) – explains how to run impositions from the command line (for advanced users)
- [QI+ Getting Started.pdf](#) – this is the getting started guide for the Quite Imposing Plus plug-in. Since many of the imposition concepts are the same, you may find it helpful to get started.
- [QI+ Manual.pdf](#) – the full technical manual for Quite Imposing Plus. This has many more details on the operation of imposition functions, much of which is relevant to this standalone product.

